

# Pro-face®

## Space-saving display solutions for production sites of the future

Multiple monitor screens can be integrated into a single screen!  
**Space-saving!**



### Point 1

**4 + 1 channels of video inputs, DVI I/O supported!**

In addition to 4 channels of video inputs, an M (multimedia) class video input I/F is provided which allows up to 5 cameras to be connected. DVI-I is supported to allow both digital and analog signals.

### Point 2

**XGA (15") compatible!**

Both video and DVI are supported.

### Point 3

**High-resolution image display of 260,000 colors!**

### Point 4

**RoHS compliant!**



VM Unit for GP3000 Series

**NEW**

# VM Unit

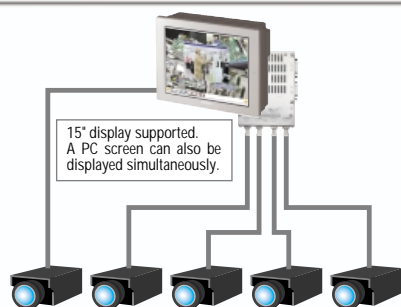
Model: GP3000-VM01



## All-in-one display with up to 5 channels of video display + DVI input/output

Space-saving tip1

**Central management of image monitors with GP Unit!**



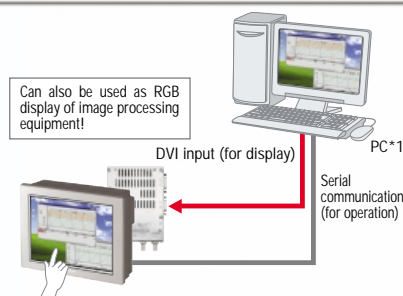
15" display supported. A PC screen can also be displayed simultaneously.

In addition to 4 channels of video inputs, an M class video input I/F is provided which allows connection of up to 5 cameras. It is also possible to display video images and a PC screen simultaneously.

\* The 5-channel display is supported only by M class models. The GP-3500T and 3600T (C class) and GP-3510T/3500T and 3600T (S class) offer 4-channel display.

Space-saving tip2

**Central management of a PC screen with GP Unit!**



Can also be used as RGB display of image processing equipment!

DVI input (for display)

PC\*1

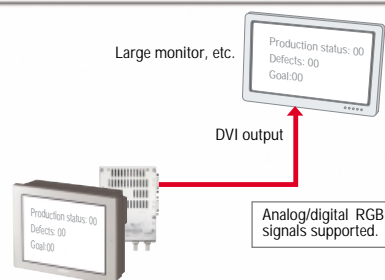
Serial communication (for operation)

The DVI input can be used to display a PC screen on the GP located at a production site. The operation manual PDF and alarm history data stored in the PC can also be displayed on the GP.

\*1. To operate the PC from the GP, the mouse emulator software must be installed. It can be downloaded from the Pro-face support site "Otasuke Pro!" (<http://www.pro-face.com/otasuke/>).

Space-saving tip3

**DVI output for large monitor display!**



Large monitor, etc.

Production status: 00  
Defects: 00  
Goal: 00

DVI output

Analog/digital RGB signals supported.

A GP screen can be output to a large monitor to show the current production volume or to display alarms as an electronic bulletin board.

**Video Input Signal Specifications (VIDEO IN0 to 3)**

Item	Model	GP3000-VM01
Input Signal		NTSC or PAL compliant *1
Input Amplitude		1V p-p, Terminal Resistance: 75Ω
Maximum Transmission Distance		Max. 10m is recommended.
Display Colors		262,144Colors
Resolution		NTSC: 640 x 480, PAL: 768 x 576 *2
No. of Interface		4
Connector (Main Unit)		75Ω BNC (Receptacle)

\*1. NTSC and PAL systems cannot be applied at the same time.  
 \*2. When PAL is used for the GP-3500T or GP-3550T, part of the image is not displayed.

**Video Input Interface**

Items	Specifications
Recommended Connector	BNC-P-3DV-SA (Hirose Electric Co., Ltd.)
Recommended Cable	3C-2V Coaxial Cable

**DVI-I Input (DVI IN)**

Items	Specifications	Remarks
Signal System	VESA standard Analog RGB, separated (DVI-A analog RGB interface) TMDS standard Digital RGB (DVI-D interface)	
Maximum Transmission Distance	5m or less is recommended (10m when connected to a PS-2000B unit or PL-3000B unit with DVI-D interface *1)	Varies depending on the performance of the PC connected.
Display Colors	262,144Colors	
Resolution	VGA, SVGA, XGA	
No. of Interface	1	
Connector (Main Unit)	DVI-129 pin (Socket)	

\*1. The PS-2000B or PL-3000B unit settings need to be changed.

**DVI-I Output (DVI OUT)**

Items	Specifications	Remarks
Signal System	VESA standard Analog RGB, separated (DVI-A analog RGB interface) TMDS standard Digital RGB (DVI-D interface)	
Maximum Transmission Distance	10m or less is recommended	Varies with the performance of the monitor connected.
Display Colors	262,144Colors	
Resolution	VGA, SVGA, XGA	The resolution of the output image depends on the connected GP.
No. of Interface	1	
Connector (Main Unit)	DVI-129 pin (Socket)	

**Cables**

Product Name	Model No.	Description
DVI-D Cable (5m)	FP-DV01-50	Digital Visual Interface cable used to input/output image signals from the host to the Display unit. DVI1.0 compliant (DVI-D 24-pin plug). (5 m or 10 m)
DVI-D Cable (10m)	FP-DV01-100*1	
DVI-I RGB Conversion Cable	CA7-CBLCVRGB-01	A cable converting DVI-A to RGB

\*1. Only when the VM unit is connected with PS-2000B or PL-3000B (Revision B or later), FP-DV01-100 can be used.

**Software**

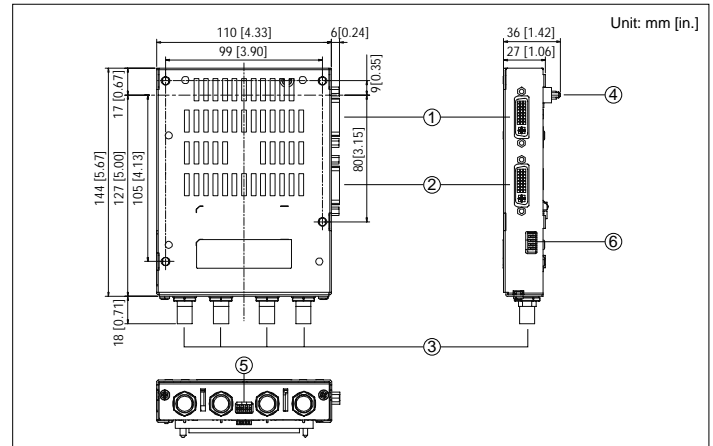
The VM unit is compatible with GP-Pro EX Ver. 2.21 or later (GP3000 series). Depending on your software version, it is necessary to download the latest module and install the additional programs. For details, please access Pro-face's site that offers support for Pro-face products. (<http://www.pro-face.com/otasuke/>)

**Applicable model (Common to VM unit/DVI unit)**

GP3000 Series	GP-35*0T *1, GP-36*0T, GP-37*0T
---------------	---------------------------------

\*1. When the VM unit or DVI unit is used, no other communication unit can be used.

**External View and Dimensions**

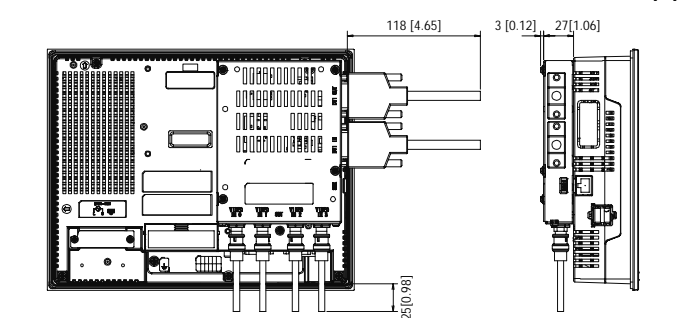


- ① DVI OUT: A connector which outputs DVI-I signals.
- ② DVI IN: A connector which inputs DVI-I signals.
- ③ VIDEO IN: Connectors which input video images. Four channels of video images can be input.
- ④ Display unit connector: A connector which connects to the VM unit interface of the display unit.
- ⑤ SW1: A switch which adds 75Ω for termination to the VIDEO IN connector. (Initial setting: ON)
- ⑥ SW2: A switch which selects the connector to be connected to DVI IN. Set this switch to ON to connect a DVI-D or DVI-I connector. Set this switch to OFF to connect a DVI-A connector (Analog RGB).

**Installation Specifications**

Weight	Approx. 600g [1.3lb] or less
External Dimensions	W110mm [4.33in.] x H144mm [5.67in.] x D27mm [1.06in.] (excluding projection and connector part)

**GP-3500T External View with the VM Unit**



\* The dimension varies depending on the type of cables being connected.

**Various other image display solutions!**

**DVI unit (Model: GP3000-DVI01)**

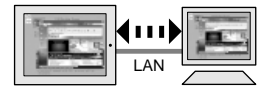
Digital/analog RGB input-dedicated unit is also available! <1 channel of DVI-I input>

\*This unit cannot be used for video display and digital/analog RGB output.  
 \*Applicable for GP-35\*0T, 36\*0T, and 3750T.



**GP-Pro EX's RPA function can be used!**

PC screen can be displayed on the GP unit via Ethernet. Remote control available at low cost.



\*Applicable for the 7.5" or larger TFT models featuring an Ethernet I/F.  
 \*The configuration requires a server PC with GP-Pro EX (Version 2.0 or later), RPA license (Model: EX-RPA <optional>), and Ultra VNC Version 1.0.2 are installed, a LAN cable, and a hub (commercially available). The connection should be established between a single server and a single GP unit.

**Pro-face** Pro-face is a registered trademark of Digital Electronics Corporation in Japan, U.S.A., Canada, Europe and other areas and countries.

**ACCESS!** [www.pro-face.com](http://www.pro-face.com)  
**Worldwide Contacts**  
<http://www.pro-face.com/worldwide/>

**Web Support** **Otasuke Pro!** <http://www.pro-face.com/otasuke/>  
 We are pleased to help you to reduce man-hours!  
 •FAQ •Compatibility Information •Sample Download  
 •Manual Download •Updates/Drivers Download .etc

⚠ Caution: Before operating any of these products, be sure to read all related manuals thoroughly.  
 ● All product names used in this catalog are the registered trademarks or trademarks of their respective companies.  
 ● All information contained in this catalog is subject to change without notice.  
 ©2008.9 Digital Electronics Corporation. All Rights Reserved.